

USERGUIDE | MT4+ SESSION MAP



1. INSTALLATION OF MT4+SESSION MAP	PAGE 03
2. USING MT4+SESSION MAP	PAGE 06
A. NEWS MARKERS	PAGE 07
B. FLOATING P/L, ACCOUNT INFORMATION, AND COLOUR-CODING	PAGE 08
C. SESSION BARS	PAGE 09

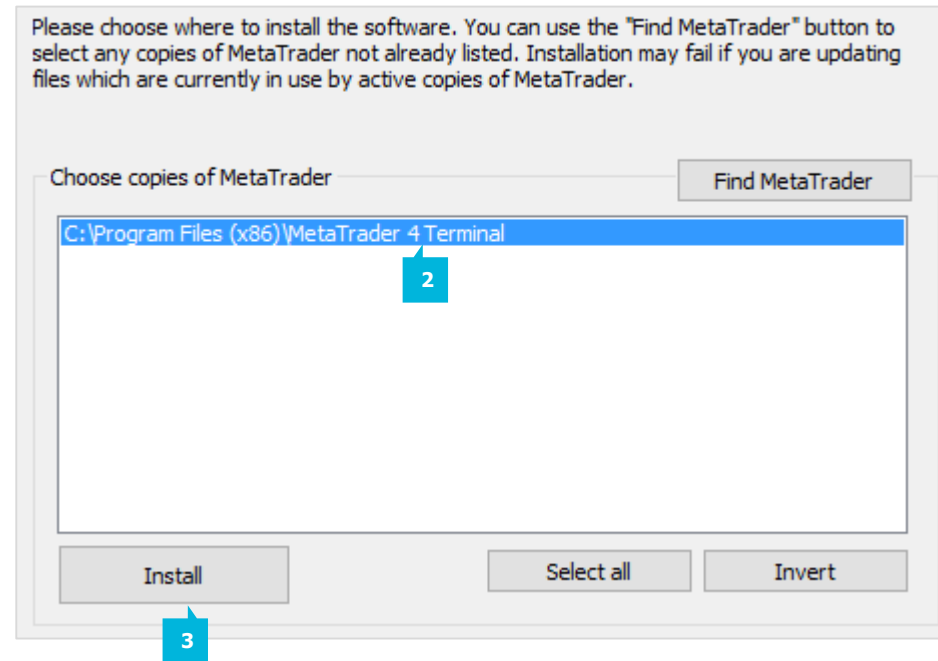
In order to install **MT4+ Session Map**, follow the steps below:

1. Click [here](#) to download the retrofit installer containing the full package of JFD MT4+ exclusive add-ons.
2. Run the installer file (1) on your computer.
3. Select the MetaTrader 4 terminal folder (2) where you would like to install the Add-ons package and press the **Install** button (3).
4. Press **OK** in the confirmation dialog box that will appear after successful installation.

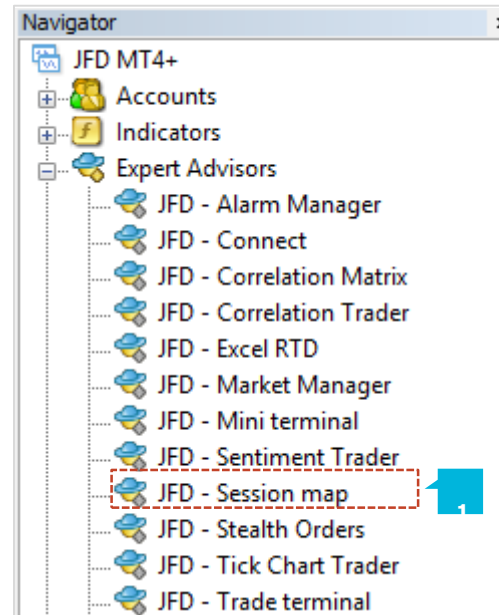
NOTE

Before installing JFD's MT4+ Add-ons, close your MT4 terminal. The add-ons cannot be installed if the MetaTrader 4 terminal is running.

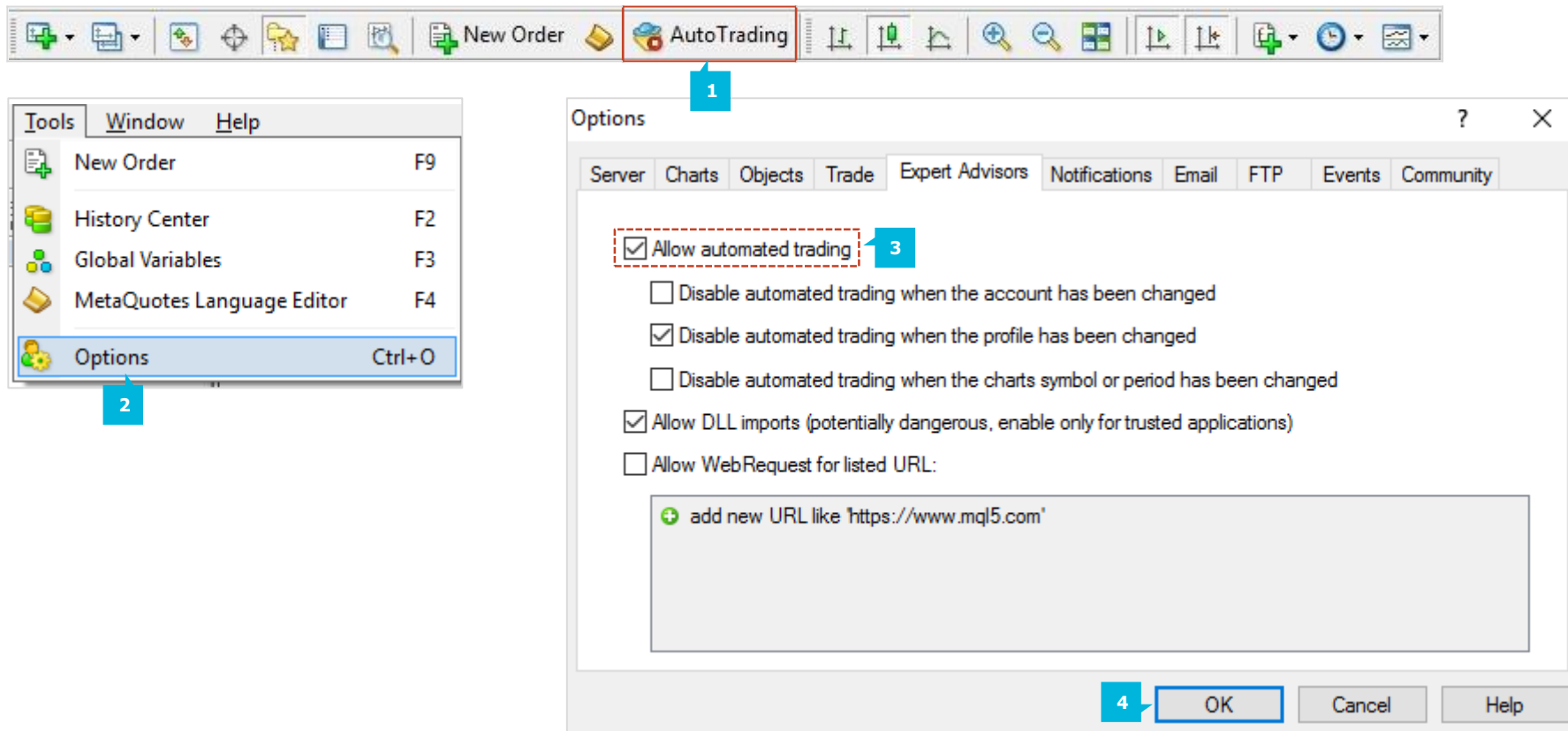
Name <	Type	Size	Packed
JFD-MT4-Apps.exe	.exe	3.0 MB	3.0 MB



After successful installation, open your MT4+ terminal and you will find the **MT4+ Session Map** (1) along with all other JFD Add-ons in the **Navigator** window under **Expert Advisors**.



In order to use the add-ons, the Expert Advisors should be enabled. Simply click the **AutoTrading** button (1) on the top toolbar. Alternatively, you can open **Tools** main menu and select **Options** (2). In the dialog box that will appear, open the **Expert Advisors** tab (3) and make sure that the check-box **Allow Automated Trading** (4) is ticked. Then press the **OK** button (5).



The **MT4+ Session Map** shows your **Current Local Time (1)** in relation to sessions during the trading day, i.e. the core trading hours when institutional dealers are most active in Sydney, Tokyo, London and New York.

The MT4+ Session Map also shows markers for future news events; information about your floating P/L and equity; and price activity during each session.



NOTE

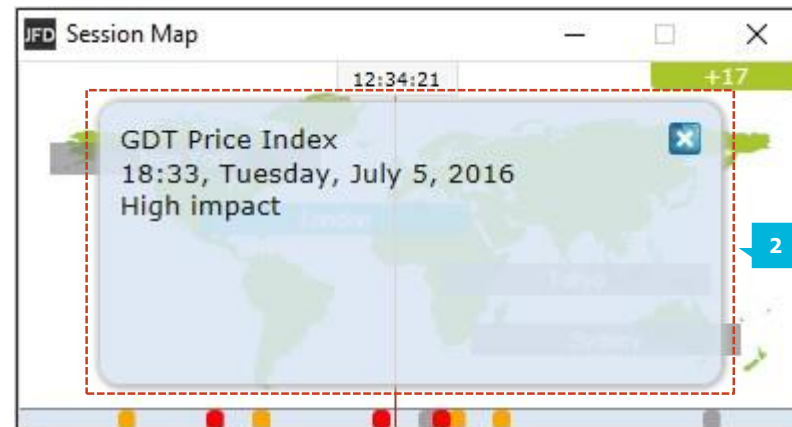
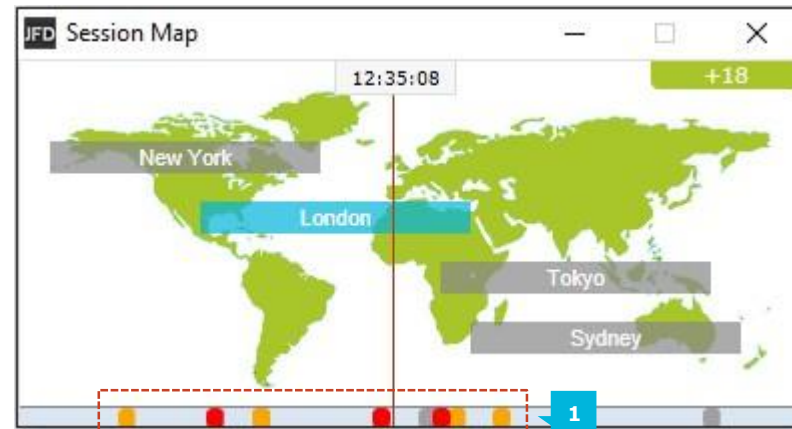
The current time is taken from your computer clock, and its accuracy depends on your computer clock being accurate.

A. NEWS MARKERS

The bar at the bottom of the map shows markers for future news events, e.g. non-farm payroll. Items to the right of the current time are not in the past: they are a long way into the future.

Each marker is **colour-coded (1)** to indicate its importance: red for high-impact events; orange for medium; and grey for low.

You can hover the mouse over a marker to display a tooltip showing what **the event (2)** is, and you can click on a marker to see that text in full. For example:

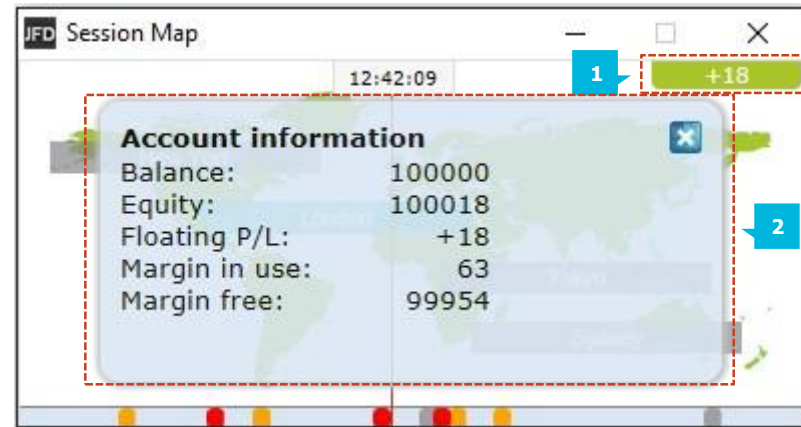


B. FLOATING P/L, ACCOUNT INFORMATION, AND COLOUR-CODING

The **box at the top of the map (1)** shows the current floating P/L on your account (if any).

The map is color-coded depending on the floating P/L: green for profit; red for loss; grey if no open position.

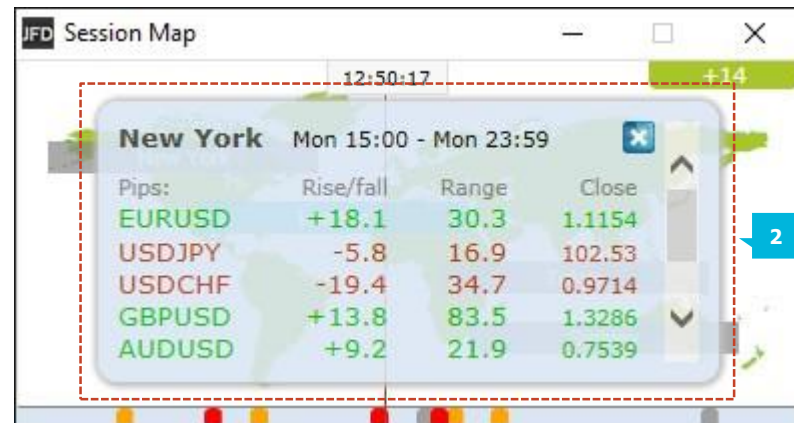
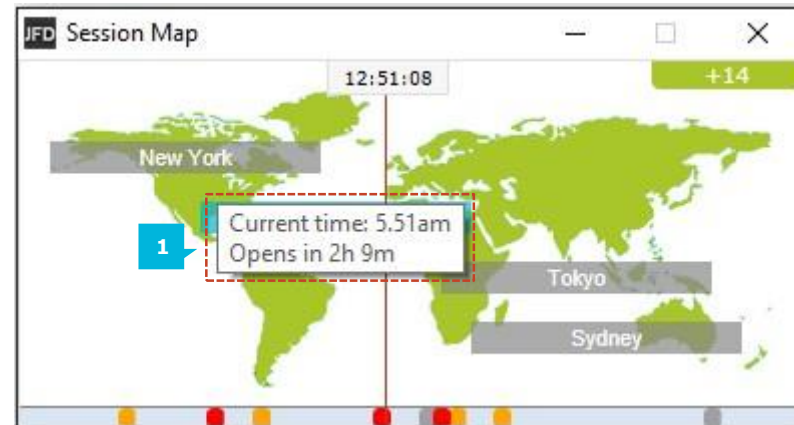
You can get a **summary of your account (2)** by clicking on the P/L box.



C. SESSION BARS

If you hover the mouse over a session bar such as *New York*, you will see a tooltip showing the current local time (1) in New York and how long it is until core trading opens or closes in that region. You can also click on a session bar to show a summary of price action (2) for major symbols during that session.

The following example shows the most recent trading in New York. EURUSD rise 18.1 pips during the session, with a trading range of 30.3 pips, closing at 1.1154.



NOTE

The prices used in the MT4+ Session Map are an average of multiple brokers and may differ very slightly from the prices displayed by JFD.

CONTACT US

Kakos Premier Tower
Kyrillou Loukareos 70
4156 Limassol, Cyprus
Fax: +357 25763540
Tel: +357 25878530

SUPPORT

Helpdesk Phone: [+49 40 87408688](tel:+494087408688)

Helpdesk E-mail: support@jfdbrokers.com

Live chat: [Chat now!](#)

Web: www.jfdbrokers.com

JFD is a leading Group of Companies offering financial and investment services and activities. "JFD Brokers" is a brand name and registered trademark owned and used by the JFD Group of Companies, which includes: JFD Group Ltd, a company with registration number HE 282265, authorized and regulated by the Cyprus Securities and Exchange Commission - CySEC (Licence number: 150/11) and JFD Overseas Ltd which is authorized and regulated by the Vanuatu Financial Services Commission (License number 17933).

JFD
BROKERS