

# USERGUIDE | MT4+ MARKET MANAGER



<b>1. INSTALLATION OF MT4+MARKET MANAGER</b>	<b>PAGE 03</b>
<b>2. ABOUT THE MT4+MARKET MANAGER</b>	<b>PAGE 06</b>
<b>3. CHOOSING THE SYMBOLS TO DISPLAY</b>	<b>PAGE 07</b>
<b>4. TRADING FROM THE MT4+MARKET MANAGER</b>	<b>PAGE 08</b>
<b>A. PLACING ORDERS</b>	<b>PAGE 08</b>
<b>B. QUICK TRADE-ENTRY FROM TEMPLATES</b>	<b>PAGE 10</b>
<b>C. CLOSING THE ENTIRE POSITION FOR A SYMBOL</b>	<b>PAGE 11</b>
<b>5. ACCOUNT INFORMATION</b>	<b>PAGE 12</b>
<b>6. ORDER LIST</b>	<b>PAGE 13</b>
<b>7. ORDER WINDOWS</b>	<b>PAGE 14</b>
<b>A. INFORMATION ABOUT S/L AND T/P</b>	<b>PAGE 15</b>
<b>B. CHANGING STOP-LOSSES ETC.</b>	<b>PAGE 16</b>
<b>8. POP-UP SYMBOL WINDOWS</b>	<b>PAGE 17</b>
<b>A. SYMBOL INFORMATION</b>	<b>PAGE 18</b>
<b>B. TRADING FROM THE POP-UP SYMBOL WINDOW</b>	<b>PAGE 19</b>
<b>9. POP-UP MENU FOR SYMBOLS</b>	<b>PAGE 20</b>

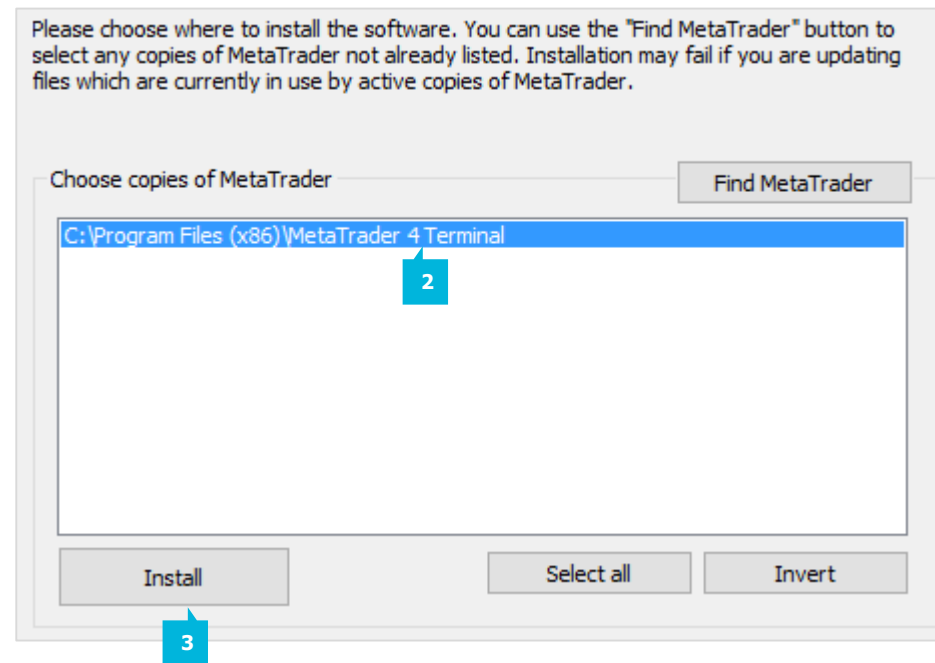
In order to install MT4+ Market Manager, follow the steps below:

1. Click [here](#) to download the retrofit installer containing the full package of JFD MT4+ exclusive add-ons.
2. Run the installer file (1) on your computer.
3. Select the MetaTrader 4 terminal folder (2) where you would like to install the Add-ons package and press the **Install** button (3).
4. Press **OK** in the confirmation dialog box that will appear after successful installation.

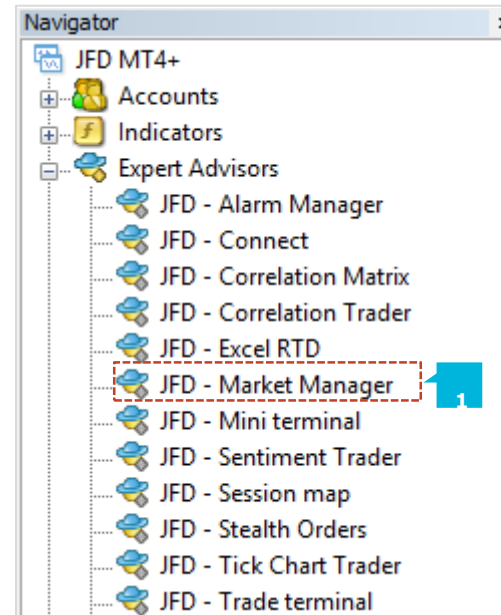
**NOTE**

Before installing JFD's MT4+ Add-ons, close your MT4 terminal. The add-ons cannot be installed if the MetaTrader 4 terminal is running.

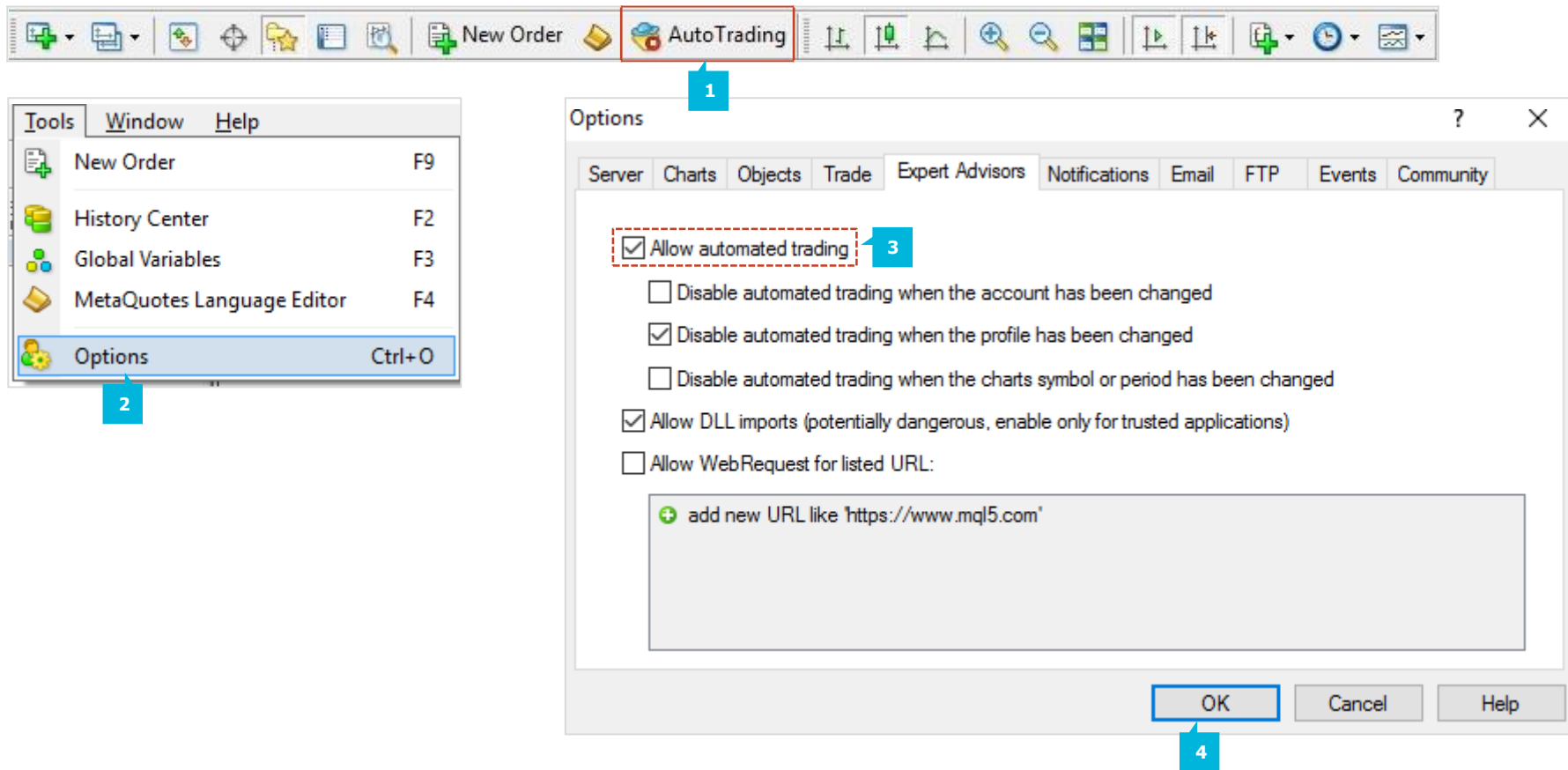
Name <	Type	Size	Packed
JFD-MT4-Apps.exe	.exe	3.0 MB	3.0 MB



After successful installation, open your MT4+ terminal and you will find the **MT4+ Market Manager** (1) along with all other JFD Add-ons in the **Navigator** window under **Expert Advisors**.



In order to use the add-ons, the Expert Advisors should be enabled. Simply click the **AutoTrading** button (1) on the top toolbar. Alternatively, you can open **Tools** main menu and select **Options** (2). In the dialog box that will appear, open the **Expert Advisors** tab (3) and make sure that the check-box **Allow Automated Trading** (4) is ticked. Then press the **OK** button (5).



The MT4+ Market Manager does four main things:

- It shows a watch list of both symbol prices and open positions, with facilities for closing positions and opening new ones
- It displays headline information about the account, such as equity, balance, and margin usage
- You can view a list of all open tickets, i.e. all open positions and pending orders, with the ability to open each ticket as a separate window, and then modify or close the position or order
- It provides a concise summary of recent price activity on a symbol

On MT4 the **List of symbols (1)** in the **MT4+ Market Manager** synchronises with the MT4 **Market Watch**. You configure the symbols in the **MT4+ Market Manager** by configuring the MT4 market watch.

Symbol	Bid	Ask
GBPUSD	1.31820	1.31827
EURUSD	1.10173	1.10176
USDJPY	106.249	106.253
AUDCAD	0.97741	0.97758
AUDCHF	0.73906	0.73920
AUDJPY	79.570	79.583
AUDNZD	1.07324	1.07343
AUDSGD	1.01510	1.01532
AUDUSD	0.74893	0.74897
NZDSGD	0.94577	0.94592
USDDKK	6.75110	6.75260
EURTRY	3.38534	3.38639

Symbol	Bid	Ask	Lots	Profit
USDCHF	0.97638	0.97649	-	-
GBPUSD	1.33327	1.33336	-0.01	+13
EURUSD	1.10967	1.10971	-0.01	+2
USDJPY	102.836	102.842	+0.01	+0
USDCAD	1.29520	1.29530	-	-
AUDUSD	0.74633	0.74639	-0.01	-3
EURGBP	0.83221	0.83230	-	-
EURAUD	1.48669	1.48687	-	-
EURCHF	1.08349	1.08361	-	-
EURJPY	114.112	114.122	-	-
GBPCHF	1.30176	1.30201	+0.01	-15
CADJPY	79.388	79.403	-	-

**A. PLACING ORDERS**

Clicking on the **Bid** or **Ask price** (1) for a symbol opens a dealing form with the order-type press to “buy” or “sell”.

Symbol	Bid	Ask	Lots	Profit
EURUSD	1.11266	1.11268	-	-
AUDJPY	76.404	76.416	-	-
GBPUSD	1.34690	1.34702	-	-
EURGBP	0.82603	0.82608	-	-
AUDCAD	0.96309	0.96323	-	-
EURAUD	1.49665	1.49682	-	-
GBPAUD	1.81175	1.81212	-	-
PTR.L	66.90	67.11	-	-
AGN.A	3.5110	3.5150	-	-
AKZA.A	55.94	55.97	-	-
APAM.A	33.45	33.45	-	-
ASML.A	87.57	87.61	-	-
INGA.A	8.982	8.989	-	-



The **New order** window appears where you can set the parameters of your order. Here you can choose between market and pending orders, you can set **SL (1)**, **TP (2)** or **Trailing stops (3)**. The Option **Save template (4)** gives the possibility to create templates with certain order parameters and to reuse them further.

The screenshot shows the 'New order-- Web page Dialogue' window for the GBPUSD pair. The window contains the following elements:

- Order type or template:** A dropdown menu set to 'Sell'.
- Lot size:** A dropdown menu set to 'Fixed lot size'.
- Lots:** A text input field containing '0.2'.
- Stop-loss:** A dropdown menu set to '(none)', highlighted with a red dashed box and a blue arrow labeled '1'.
- Take-profit:** A dropdown menu set to '(none)', highlighted with a red dashed box and a blue arrow labeled '2'.
- Trailing stop:** A dropdown menu set to '(none)', highlighted with a red dashed box and a blue arrow labeled '3'.
- Order comment:** A text input field with a small up/down arrow icon.
- Buttons:** 'Place order' and 'Save template'. The 'Save template' button is highlighted with a blue arrow and the number '4'.

### B. QUICK TRADE-ENTRY FROM TEMPLATES

The **MT4+ Market Manager** shares **Templates** with **MT4+ Trade Terminal** and **Mini Terminal** add-ons. You can quickly execute a template by holding down the **Ctrl** key while clicking on the **Bid** or **Ask price (1)** for a symbol, and then clicking on the template name (2):

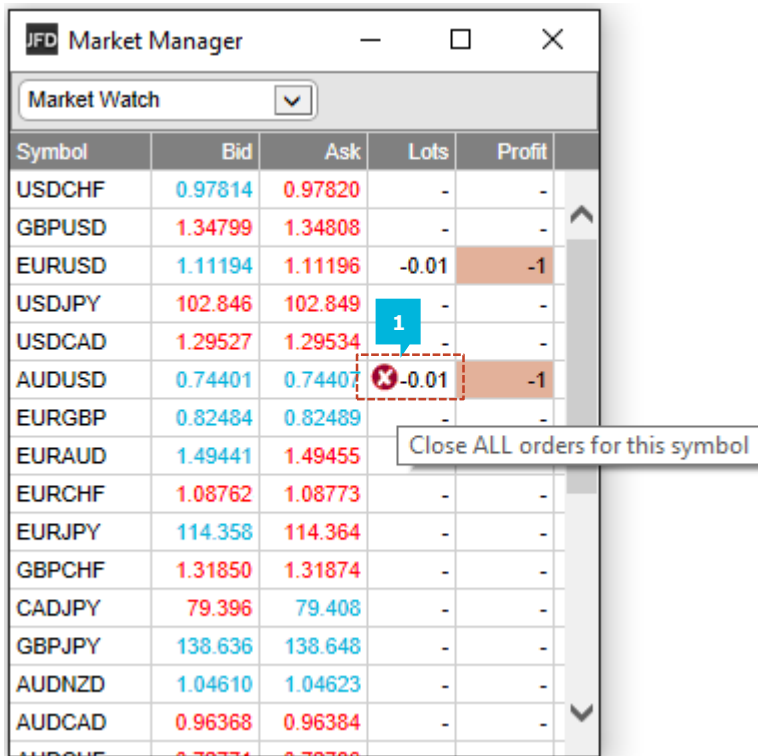
Symbol	Bid	Ask	Lots	Profit
EURUSD	1.11069	1.11069	-	-
AUDJPY	EURUSD - Sell		-	-
GBPUSD	buy		-	-
EURGBP			-	-
AUDCAD			-	-
EURAUD			-	-
GBPAUD	1.81248	1.81286	-	-
PTR.L	66.90	67.11	-	-
AGN.A	3.5260	3.5300	-	-
AKZA.A	55.70	55.74	-	-
APAM.A	33.45	33.45	-	-
ASML.A	87.46	87.52	-	-
INGA.A	8.928	8.933	-	-

**NOTE**

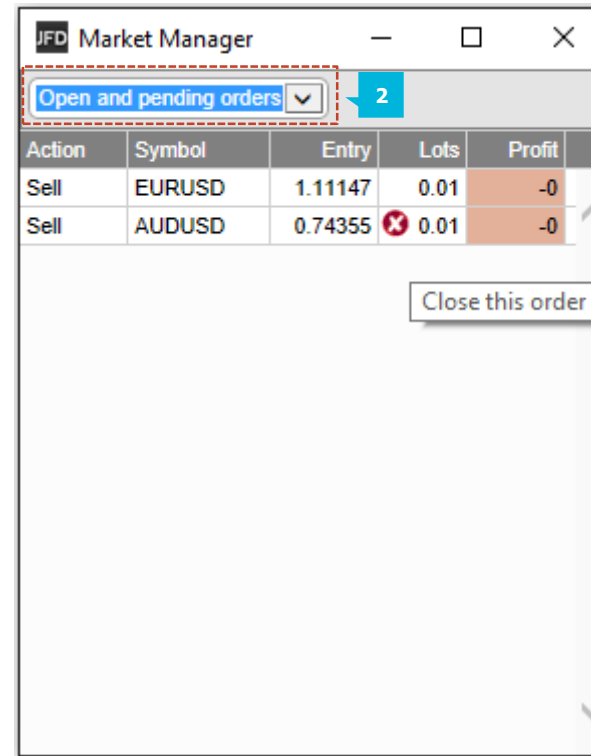
Templates have an order-type stored as part of their definition. In this context, the order-type is replaced by "buy" or "sell" depending on whether you have clicked on the bid price or the ask price.

### C. CLOSING THE ENTIRE POSITION FOR A SYMBOL

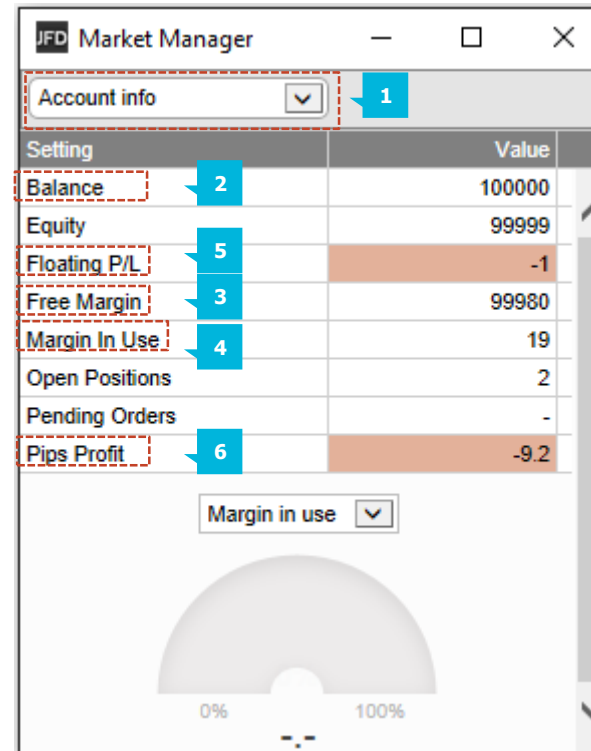
You can quickly close all the orders for a symbol by clicking on the **Position size** (1). While the mouse is over the column, an X icon appears next to the volume to indicate this:



If there are multiple tickets which make up a position, you can close individual tickets using the filter **Open and pending orders** (2) and then close only the desired order.



You view information about your account and profitability by choosing the **Account info** (1) option from the drop-down menu. This displays headline values about the account such as **Balance** (2) and **Free Margin** (3), and also shows a choice of three key metrics in graphical form (**Margin Usage** (4), **Floating P/L** (5), or **Pips Profit** (6)).



The **Open and Pending** orders option (1) in the drop-down menu displays a list of each open ticket on the account, i.e. all open positions and pending orders.

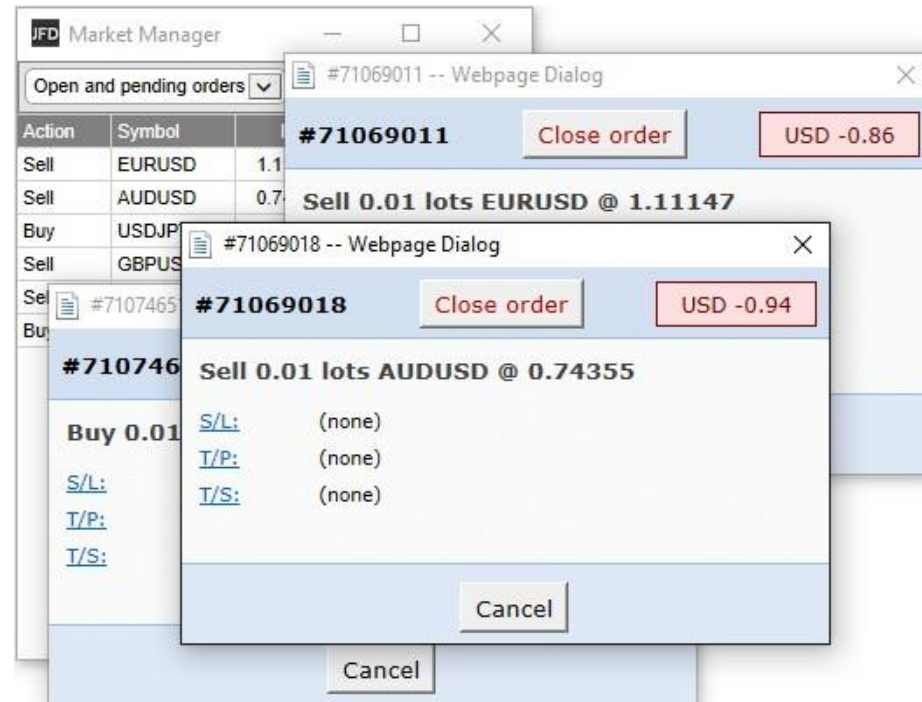
Action	Symbol	Entry	Lots	Profit
Sell	EURUSD	1.11147	0.01	-2
Sell	AUDUSD	0.74355	0.01	-1
Buy	USDJPY	102.781	0.01	-0
Sell	GBPUSD	1.34662	0.01	+0
Sell	GBPJPY	138.397	0.01	+1
Buy	GBPCHF	1.31670	0.01	-1

You can close a position or pending order by clicking on its volume, or you can inspect an order and change its details by clicking on the action such as **Buy** or **Sell** (2). This opens an order window as discussed in the next section.

Action	Symbol	Entry	Lots	Profit
Sell	EURUSD	1.11147	0.01	-2
Sell	AUDUSD	0.74355	0.01	-1
Buy	USDJPY	102.781	0.01	-0
Sell	GBPUSD	1.34662	0.01	+0
Sell	GBPJPY	138.397	0.01	+0
Buy	GBPCHF	1.31670	0.01	-1

Ticket #71074651

Clicking on a ticket's action in the order list opens a pop-up window for that order. You can have any number of these pop-up windows visible at once.



### A. INFORMATION ABOUT S/L AND T/P

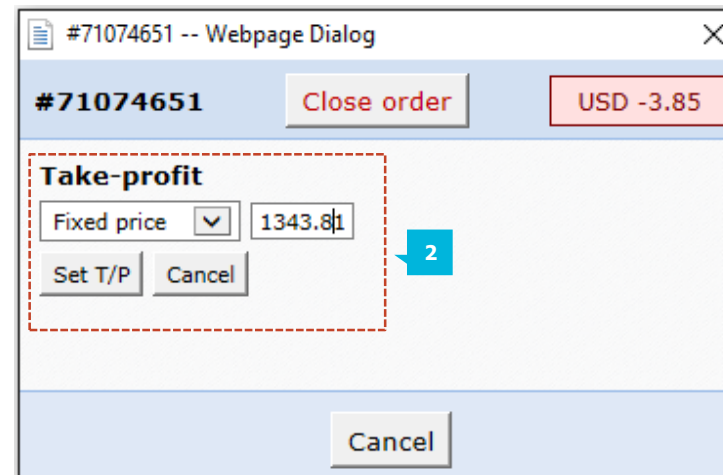
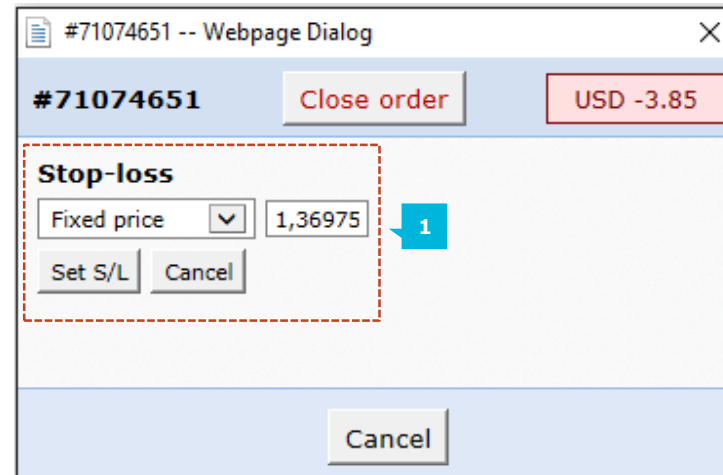
The information shown about the S/L and T/P includes not only the price, but also the distance in pips from the current Ask/Bid price, and the cash effect on the balance if the S/L or T/P is hit.

#### NOTE

When s/l or t/p is set to a value in pips, it is measured from the open/current price. For example, a buy at 1.2345 with s/l of 10 pips will have its s/l set to 1.2335. (In other words, when creating s/l or t/p on an order, pip values are measured from the ask price.) However, the information in the pop-up order window shows how close the s/l and t/p are to being hit; the figures are measured from the other side of the spread.

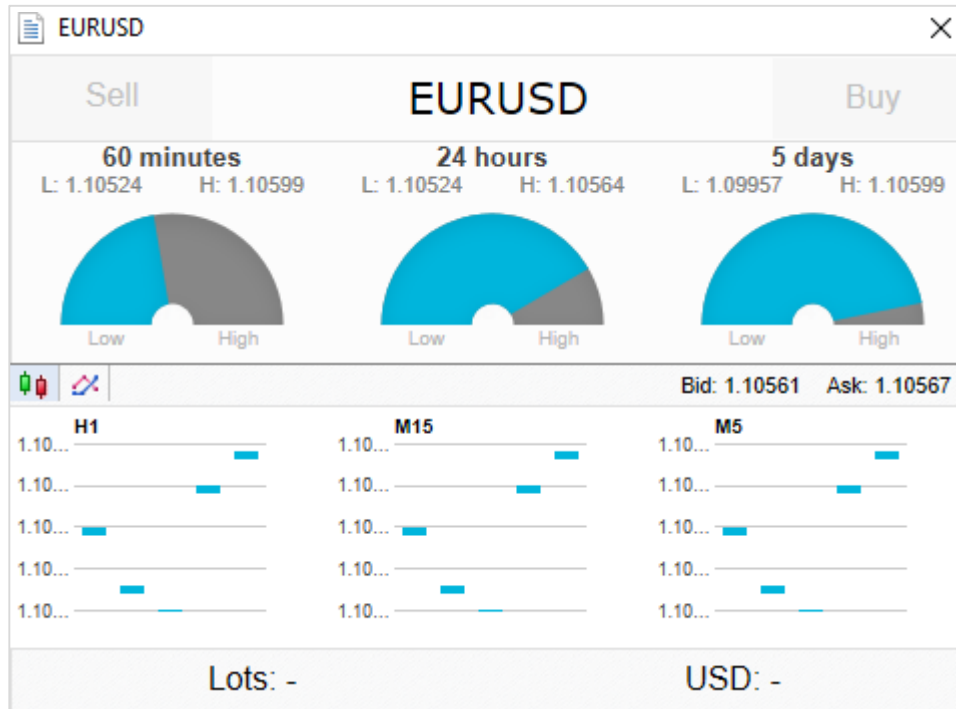
### B. CHANGING STOP LOSSES ETC.

The order window lets you change the S/L, T/P or Trailing Stop as well as just viewing this information. The S/L (1) and T/P (2) can be set using all the same options which are available when opening an order, not just a fixed price or a number of pips. For example, the Stop Loss can be set to a price corresponding to a cash risk of USD 50.





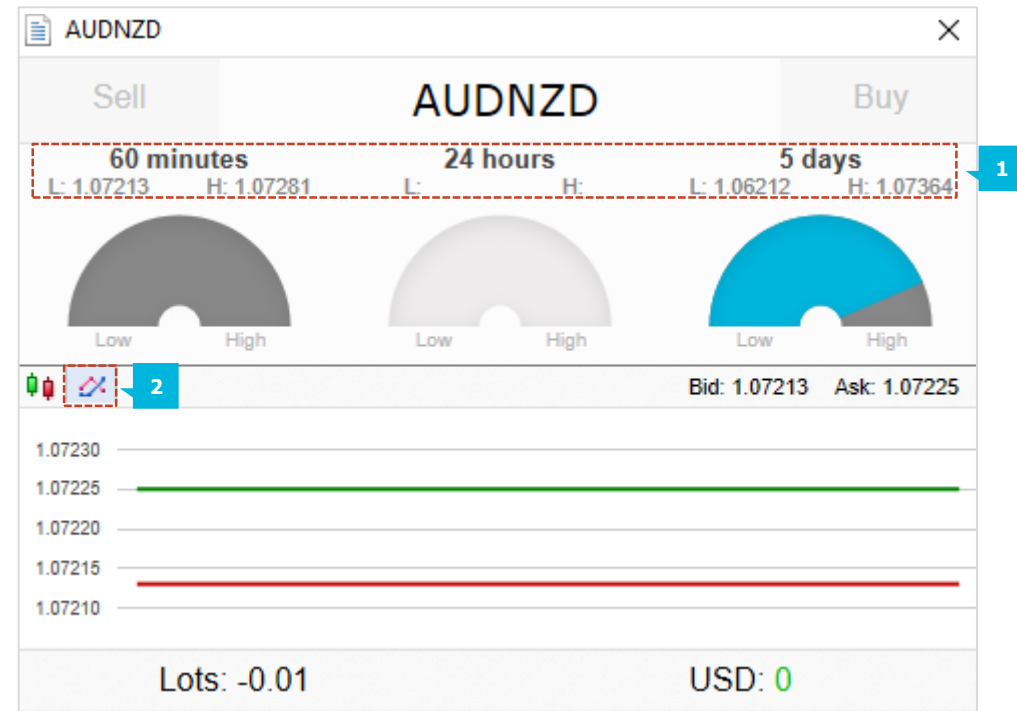
**Symbol Names** in the MT4+ Market Manager act as links for opening a pop-up window showing recent price movements on that symbol. You can open any number of these pop-up symbol windows.



### A. SYMBOL INFORMATION

The pop-up symbol window shows the current price versus the high-low range over the last 60 minutes, 24 hours, and 5 days (1); recent H1, M15 and M5 candles; the current volume; and profitability of any open position in the symbol. This is drawn from the data in your JFD trading platform, and there can be a short delay before all the information appears if the historic data needs to be downloaded from the JFD's servers.

The symbol window can be switched so that it shows very recent price activity instead of the candles, using the **Chart button** (2). This is not a tick chart, it is a 500-millisecond chart which continues updating even if there is no market activity.



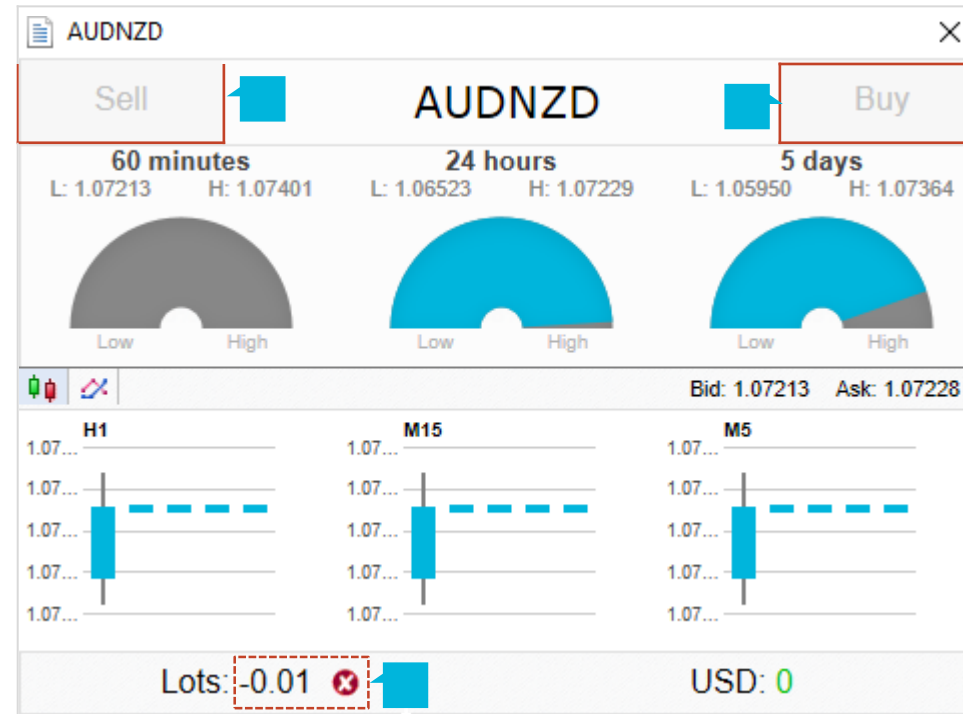
#### NOTE

That the gauge for the last 60 minutes is not the same as the current H1 candle. The former runs from e.g. 10:23am to 11:22am whereas the current H1 candle runs from e.g. 11:00am to 11:22am.

## B. TRADING FROM THE SYMBOL WINDOW

You can carry out three trading actions from the symbol window:

- Close an open position (if any) by clicking on the volume (1).
- Open the standard dealing form by clicking on the **Buy** and **Sell** buttons (2) in the top-left and top-right corners.
- Quickly execute a saved template by holding down **Ctrl** while clicking on the **Buy** or **Sell** buttons (2).



When right-clicking on any symbol name in the **MT4+ Market Manager**, you can also hold down the **Ctrl** key while clicking. This displays a pop-up menu with the following options:

- **Symbol information (1)** - opens a pop-up window for that symbol
- **New chart (2)** - opens a new chart for the selected symbol. If there is a template in MT4 called **Market Watch**, then this is automatically applied to the new chart. If not, the default template will be used.

Symbol	Bid	Ask	Lots	Profit
USDCHF	0.97667	0.97675	-	-
GBPUSD	1.33202	1.33221	-0.01	+14
GBPUSD		.10940	-0.01	+2
Symbol information	1	02.923	+0.01	+1
New chart:	2	.29562	-	-
AUDUSD		0.74617	-0.01	-3
EURGBP		0.83281	-	-
EURAUD		1.48690	-	-
EURCHF		1.08361	-	-
EURJPY		114.178	-	-
GBPCHF	1.30094	1.30127	+0.01	-16
CADJPY	79.435	79.448	-	-

## CONTACT US

Kakos Premier Tower  
Kyrillou Loukareos 70  
4156 Limassol, Cyprus  
Fax: +357 25763540  
Tel: +357 25878530

## SUPPORT

Helpdesk Phone: [+49 40 87408688](tel:+494087408688)

Helpdesk E-mail: [support@jfdbrokers.com](mailto:support@jfdbrokers.com)

Live chat: [Chat now!](#)

Web: [www.jfdbrokers.com](http://www.jfdbrokers.com)

JFD is a leading Group of Companies offering financial and investment services and activities. "JFD Brokers" is a brand name and registered trademark owned and used by the JFD Group of Companies, which includes: JFD Group Ltd, a company with registration number HE 282265, authorized and regulated by the Cyprus Securities and Exchange Commission - CySEC (Licence number: 150/11) and JFD Overseas Ltd which is authorized and regulated by the Vanuatu Financial Services Commission (License number 17933).

The logo for JFD Brokers features the letters 'JFD' in a large, bold, dark blue font. The letter 'D' is stylized with a vertical line through its center. Below 'JFD', the word 'BROKERS' is written in a smaller, dark blue, all-caps sans-serif font.

**JFD**  
BROKERS